

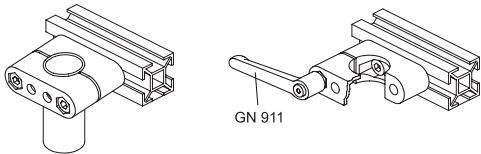
STANDARD EXECUTIONS

- **GN 231-BL-2:** natural aluminium, matte finish, AISI 304 stainless steel clamping screws and nuts.
- **GN 231-SW-2:** aluminium, epoxy resin coating, RAL 9005 black colour, matte finish, AISI 304 stainless steel clamping screws and nuts.

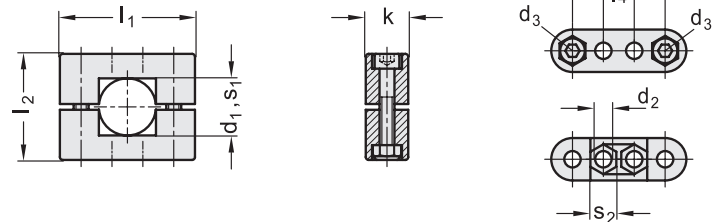
FEATURES AND APPLICATIONS

GN 231 tube supports allow an excellent match with tubes GN 990 (see page 1368).

The clamping screw d_3 may be replaced by clamping kit GN 911 (see page 1372).



Conversion Table			
1 mm = 0,039 inch			
d1/s1			
mm	inch	mm	inch
8	0.31	25	0.98
10	0.39	30	1.18
12	0.47	40	1.57
14	0.55	42	1.65
15	0.59	45	1.77
16	0.63	48	1.89
18	0.71	50	1.97
20	0.79	60	2.36



GN 231-B-BL-2

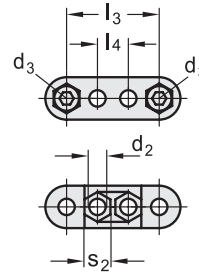
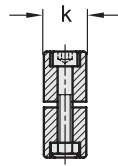
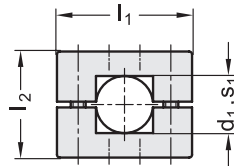
Code	Description	d1 Hole	d2	d3	k	l1	l2	l3	l4	s2	d3 Clamping kit	⚖
GN.55349	GN 231-B8-2-BL	8	6.2	M6	17	52	38	36	10.5	10	GN 911-M6-32	-
GN.55357	GN 231-B10-2-BL	10	6.2	M6	17	52	38	36	10.5	10	GN 911-M6-32	-
GN.55365	GN 231-B12-2-BL	12	6.2	M6	17	52	38	36	10.5	10	GN 911-M6-32	-
GN.55373	GN 231-B14-2-BL	14	6.2	M6	17	52	38	36	10.5	10	GN 911-M6-32	-
GN.55381	GN 231-B15-2-BL	15	6.2	M6	17	52	38	36	10.5	10	GN 911-M6-32	-
GN.55389	GN 231-B16-2-BL	16	6.2	M6	17	52	38	36	10.5	10	GN 911-M6-32	-
GN.55397	GN 231-B18-2-BL	18	6.2	M6	17	52	38	36	10.5	10	GN 911-M6-32	-
GN.55411	GN 231-B20-2-BL	20	8.5	M8	22	70	55	48	16	13	GN 911-M8-50	170
GN.55431	GN 231-B25-2-BL	25	8.5	M8	22	70	55	48	16	13	GN 911-M8-50	166
GN.55451	GN 231-B30-2-BL	30	8.5	M8	22	70	55	48	16	13	GN 911-M8-50	160
GN.55471	GN 231-B40-2-BL	40	11	M10	27	100	80	73	30	17	GN 911-M10-70	384
GN.55491	GN 231-B42-2-BL	42	11	M10	27	100	80	73	30	17	GN 911-M10-70	375
GN.55511	GN 231-B45-2-BL	45	11	M10	27	100	80	73	30	17	GN 911-M10-70	375
GN.55531	GN 231-B48-2-BL	48	11	M10	27	100	80	73	30	17	GN 911-M10-70	362
GN.55551	GN 231-B50-2-BL	50	11	M10	27	100	80	73	30	17	GN 911-M10-70	408
GN.55591	GN 231-B60-2-BL	60	11	M10	27	100	90	78	30	17	GN 911-M10-80	385

GN 231-V-BL-2

Code	Description	s1 Square hole	d2	d3	k	l1	l2	l3	l4	s2	d3 Clamping kit	⚖
GN.55607	GN 231-V10-2-BL	10x10	6.2	M6	17	52	38	36	10.5	10	GN 911-M6-32	-
GN.55615	GN 231-V12-2-BL	12x12	6.2	M6	17	52	38	36	10.5	10	GN 911-M6-32	-
GN.55623	GN 231-V14-2-BL	14x14	6.2	M6	17	52	38	36	10.5	10	GN 911-M6-32	-
GN.55631	GN 231-V15-2-BL	15x15	6.2	M6	17	52	38	36	10.5	10	GN 911-M6-32	-
GN.55639	GN 231-V16-2-BL	16x16	6.2	M6	17	52	38	36	10.5	10	GN 911-M6-32	-
GN.55647	GN 231-V18-2-BL	18x18	6.2	M6	17	52	38	36	10.5	10	GN 911-M6-32	-
GN.55661	GN 231-V20-2-BL	20x20	8.5	M8	22	70	55	48	16	13	GN 911-M8-50	170
GN.55681	GN 231-V25-2-BL	25x25	8.5	M8	22	70	55	48	16	13	GN 911-M8-50	170
GN.55701	GN 231-V30-2-BL	30x30	8.5	M8	22	70	55	48	16	13	GN 911-M8-50	156
GN.55721	GN 231-V40-2-BL	40x40	11	M10	27	100	80	73	30	17	GN 911-M10-70	378
GN.55741	GN 231-V45-2-BL	45x45	11	M10	27	100	80	73	30	17	GN 911-M10-70	364
GN.55761	GN 231-V50-2-BL	50x50	11	M10	27	100	80	73	30	17	GN 911-M10-70	348
GN.55801	GN 231-V60-2-BL	60x60	11	M10	27	100	90	78	30	17	GN 911-M10-80	342

Connecting clamps

Conversion Table 1 mm = 0,039 inch			
d1/s1			
mm	inch	mm	inch
8	0.31	25	0.98
10	0.39	30	1.18
12	0.47	40	1.57
14	0.55	42	1.65
15	0.59	45	1.77
16	0.63	48	1.89
18	0.71	50	1.97
20	0.79	60	2.36



GN 231-B-SW-2

METRIC

Code	Description	d1 Hole	d2	d3	k	l1	l2	l3	l4	s2	d3 Clamping kit	⚖
GN.55351	GN 231-B8-2-SW	8	6.2	M6	17	52	38	36	10.5	10	GN 911-M6-32	-
GN.55359	GN 231-B10-2-SW	10	6.2	M6	17	52	38	36	10.5	10	GN 911-M6-32	-
GN.55367	GN 231-B12-2-SW	12	6.2	M6	17	52	38	36	10.5	10	GN 911-M6-32	-
GN.55375	GN 231-B14-2-SW	14	6.2	M6	17	52	38	36	10.5	10	GN 911-M6-32	-
GN.55383	GN 231-B15-2-SW	15	6.2	M6	17	52	38	36	10.5	10	GN 911-M6-32	-
GN.55391	GN 231-B16-2-SW	16	6.2	M6	17	52	38	36	10.5	10	GN 911-M6-32	-
GN.55399	GN 231-B18-2-SW	18	6.2	M6	17	52	38	36	10.5	10	GN 911-M6-32	-
GN.55416	GN 231-B20-2-SW	20	8.5	M8	22	70	55	48	16	13	GN 911-M8-50	170
GN.55436	GN 231-B25-2-SW	25	8.5	M8	22	70	55	48	16	13	GN 911-M8-50	166
GN.55456	GN 231-B30-2-SW	30	8.5	M8	22	70	55	48	16	13	GN 911-M8-50	160
GN.55476	GN 231-B40-2-SW	40	11	M10	27	100	80	73	30	17	GN 911-M10-70	384
GN.55496	GN 231-B42-2-SW	42	11	M10	27	100	80	73	30	17	GN 911-M10-70	375
GN.55516	GN 231-B45-2-SW	45	11	M10	27	100	80	73	30	17	GN 911-M10-70	375
GN.55536	GN 231-B48-2-SW	48	11	M10	27	100	80	73	30	17	GN 911-M10-70	362
GN.55556	GN 231-B50-2-SW	50	11	M10	27	100	80	73	30	17	GN 911-M10-70	408
GN.55596	GN 231-B60-2-SW	60	11	M10	27	100	90	78	30	17	GN 911-M10-80	385

GN 231-V-SW-2

Code	Description	s1 Square hole	d2	d3	k	l1	l2	l3	l4	s2	d3 Clamping kit	⚖
GN.55609	GN 231-V10-2-SW	10x10	6.2	M6	17	52	38	36	10.5	10	GN 911-M6-32	-
GN.55617	GN 231-V12-2-SW	12x12	6.2	M6	17	52	38	36	10.5	10	GN 911-M6-32	-
GN.55625	GN 231-V14-2-SW	14x14	6.2	M6	17	52	38	36	10.5	10	GN 911-M6-32	-
GN.55633	GN 231-V15-2-SW	15x15	6.2	M6	17	52	38	36	10.5	10	GN 911-M6-32	-
GN.55641	GN 231-V16-2-SW	16x16	6.2	M6	17	52	38	36	10.5	10	GN 911-M6-32	-
GN.55649	GN 231-V18-2-SW	18x18	6.2	M6	17	52	38	36	10.5	10	GN 911-M6-32	-
GN.55666	GN 231-V20-2-SW	20x20	8.5	M8	22	70	55	48	16	13	GN 911-M8-50	170
GN.55686	GN 231-V25-2-SW	25x25	8.5	M8	22	70	55	48	16	13	GN 911-M8-50	170
GN.55706	GN 231-V30-2-SW	30x30	8.5	M8	22	70	55	48	16	13	GN 911-M8-50	156
GN.55726	GN 231-V40-2-SW	40x40	11	M10	27	100	80	73	30	17	GN 911-M10-70	378
GN.55746	GN 231-V45-2-SW	45x45	11	M10	27	100	80	73	30	17	GN 911-M10-70	364
GN.55766	GN 231-V50-2-SW	50x50	11	M10	27	100	80	73	30	17	GN 911-M10-70	348
GN.55806	GN 231-V60-2-SW	60x60	11	M10	27	100	90	78	30	17	GN 911-M10-80	342



Connecting clamps